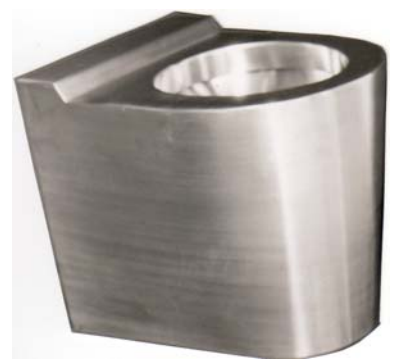


Southern Cross Stainless Steel

WALLFACE P TRAP PAN

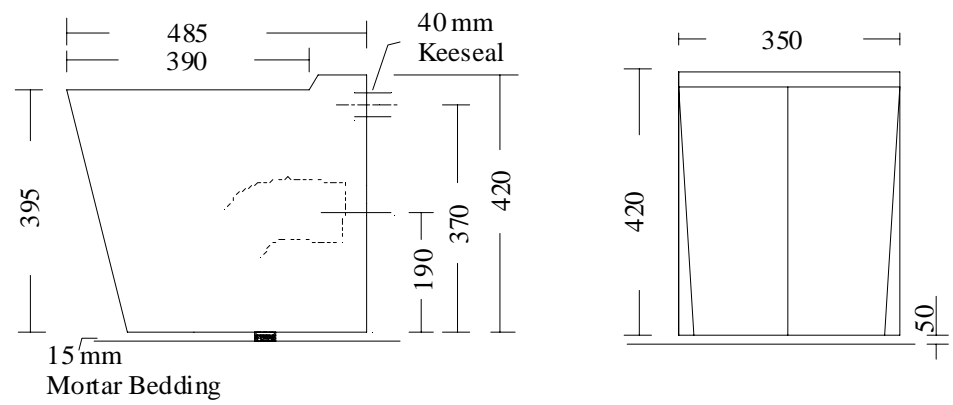
MODEL NO: STTP
PRODUCT CODE: TP2003

Full flush open rim type 304 satin finish stainless steel water closet pan, with 40mm keeseal rear entry flushpipe connection.



Featuring:

- Mid or High level operation.
- Extra body strength, generally 2mm thick
- Vandal resistance. Particularly suited for installation in such vandal prone situations as prisons, hospitals, institutions and public conveniences.



Fix securing bracket to floor with two off 10mm OD C'SK D.D dynabolts as indicated in central position, slide pan onto bracket, seal to wall and floor as required.

For disabled use add 50mm to all vertical dimensions



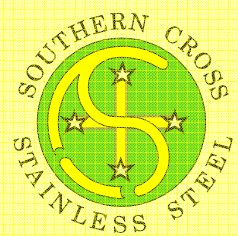
STANDARDS AUSTRALIA
LIC. 0585
PAN CAP. 6L/3L
MATCHING CISTERN
WATER WAFER
DUAL FLUSH

WELS registration
number L03329

6	litres per full flush
3	litres per half flush

3.7 litres per average flush

DRAWING NO: SC5
09/13



23-27 Clapham Road
Regents Park NSW 2143

Ph: 02 9644 2811
Fx: 02 9645 1114