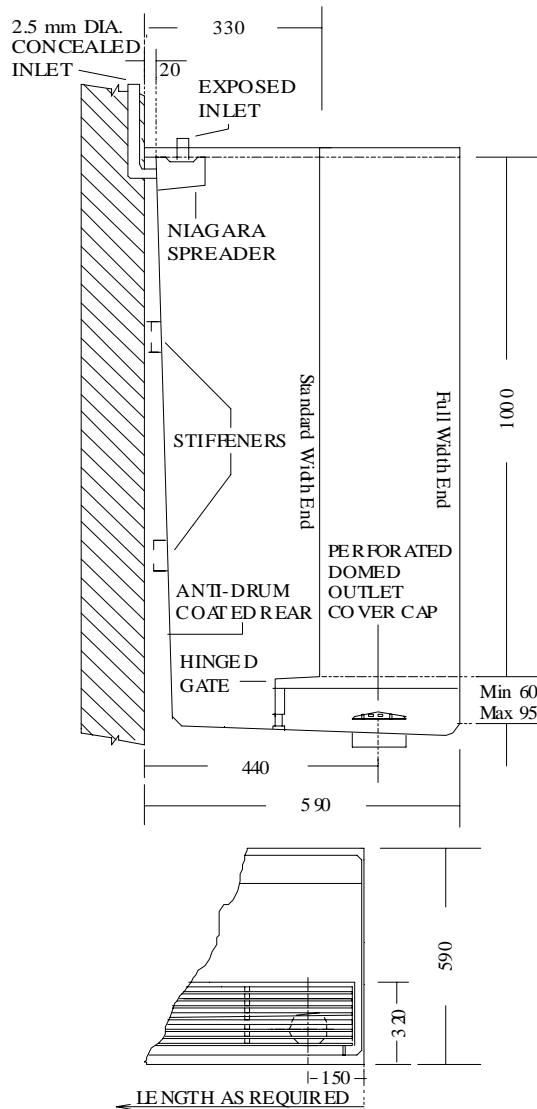


Southern Cross Stainless Steel

WIDE TROUGH FLUSHING STEP SLAB URINAL STALL

MODEL NO: STUR-WT

Length mms x 1000mm high x 1.2mm grade 304 satin finish stainless steel with niagra spreader. Concealed (or) exposed inlet. 50 or 100mm outlet. Standard (half) or full width ends.



- Standard stock lengths from 600mm to 2400mm long
- Special lengths and configurations made to order.
- Top exposed or rear concealed supply units
- Joining strips available for continuous lengths
- Site joining by welding and polishing if required.
- Exposed end panels if required

SYDNEY WATER BOARD APPROVAL
NO: 119/911701

23-27 Clapham Road
Regents Park NSW 2143

Ph: 02 9644 2811

Fx: 02 9645 1114

DRAWING NO: SC29
04/05

