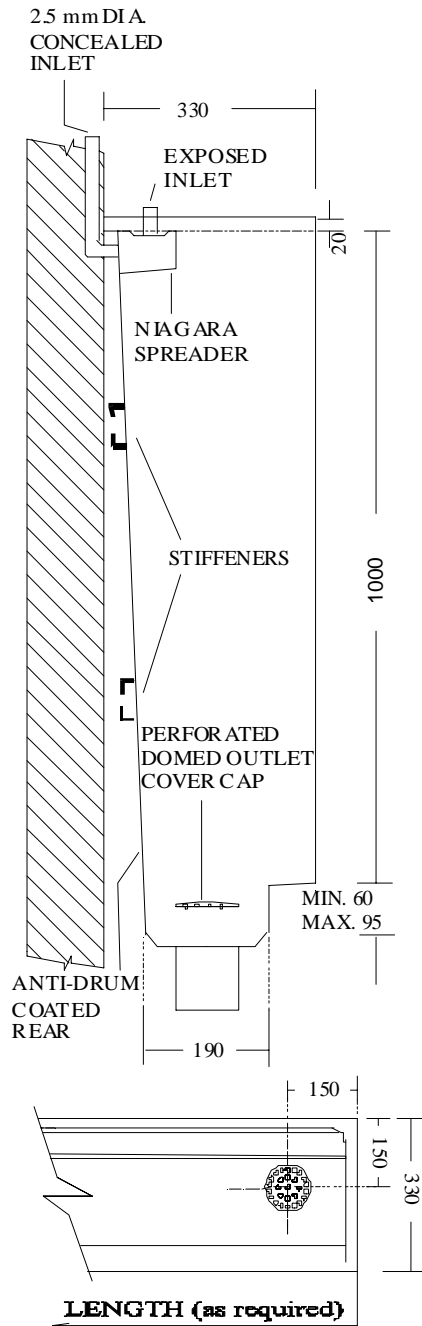


# STANDARD SLAB URINAL STALL

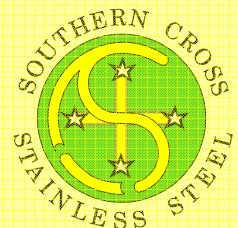
MODEL NO: STUR-S

Length mms x 1000mm high x 1.2mm grade 304 satin finish stainless steel, with niagra spreader. Concealed or exposed inlet. 50mm or 100mm outlet.



## FEATURES:

- Standard stock lengths from 600mm to 2400mm long
- Special lengths and configurations made to order
- Top exposed or rear concealed supplied units.
- Joining strips available for continuous lengths.
- Site joining by welding and polishing if required.
- Waste outlet to requested sizes— Generally 50 or 100mm diameter
- Exposed end panels if required



23-27 Clapham Road  
Regents Park NSW 2143

Ph: 02 9644 2811

Fx: 02 9645 1114

SYDNEY WATER BOARD APPROVAL  
NO: 119/9143

DRAWING NO: SC7  
04/05