

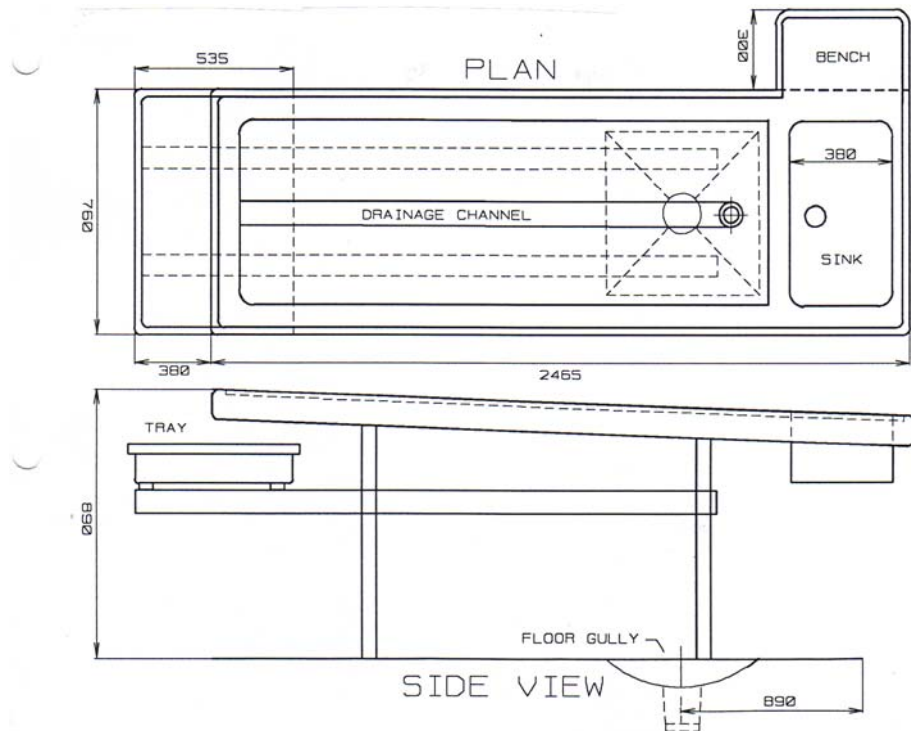
*Southern Cross Stainless Steel*

# POST MORTEM TABLE TYPE T3

MODEL NO: SPAT—T3

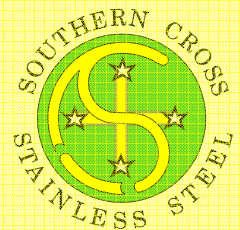
## TYPE T3

Freestanding table 2465mm long x 760mm wide, fabricated from gauge 1.2mm type 304 satin finish stainless steel, with sink & drainer at one end and retractable instrument tray at the opposite end. Supported by 32mm square stainless steel tubular bracing frame & four legs with adjustable feet. 50mm waste outlet from table and sink bowl.



DRAWING NO: SC39  
04/05

SYDNEY WATER BOARD APPROVAL  
NO 89/00565



23-27 Clapham Road  
Regents Park NSW 2143

Ph: 02 9644 2811

Fx: 02 9645 1114