

*Southern Cross Stainless Steel*

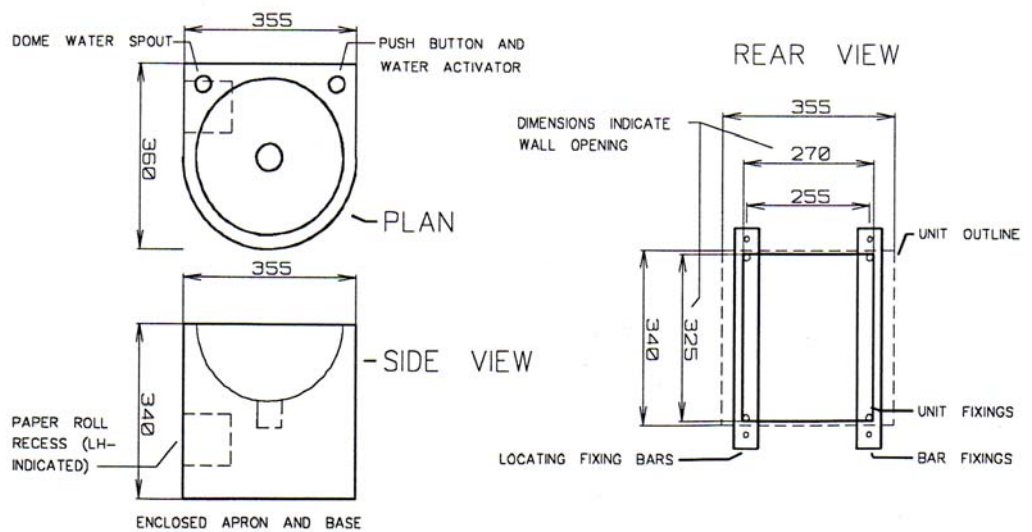
# WALLFACE CELL BASIN

MODEL NO: SPCL-FB  
PRODUCT CODE: FB3020

355 x 360 x 340mm x 2mm thick radius front, concealed apron, vandal proof, satin finish stainless steel basin. 38mm waste outlet, recessed toilet roll holder, 4 x 300mm long restraining bolts to 2 x 6mm thick stainless steel securing bars.

ALSO AVAILABLE as full pedestal to floor nominate with or without Southern Cross Stainless Steel (Enware) vandal proof fittings.

- i.e \* Chrome plated domed water spout;
- \* Push button & pressure adjustment supply valve
- \* Time flow control valve.



DRAWING NO: SC12  
05/05



23-27 Clapham Road  
Regents Park NSW 2143

Ph: 02 9644 2811  
Fx: 02 9645 1114